

Functions & Accessories

Installation & Maintenance



1200m condensate pump
Drain Pumps help to discharge condensate water from the indoor unit smoothly.



Self-Diagnosis
The self-diagnosis function in indoor units smartly determines and analyses problems occurred providing with troubleshooting hints. It is displayable and could be tracked on controller, outdoor and indoor unit itself.



Compact size
Compact size on indoor units offer greater installation flexibility especially in restricted space.



Easy cleaning
Clean effortlessly by dragging cloths across smooth flat surfaces on indoor units and prevents heavy dust accumulation.



Large capacity range
Indoor unit series with large capacity range offer more capacity options to closely satisfy various indoor loads.



Auto restart
Indoor units with Auto Restart Function, automatically restarts in default mode or restoring to the previous mode after any involuntary power cut off.



Low temperature cooling
Setting temperature of indoor units is widen with selectable temperature to as low as 16°C.



Wireless receiver
Indoor units compatible to an optional wireless receiver to enable remote control when an wireless control is not the standard controller of the unit.



Humidity sensor (optional)
Indoor units compatible with humidity sensor accessory could access to Auto Dehumidification function on the indoor unit.



Hi-Motion (optional)
Hi-Motion is an human presence sensor optional accessory which enables auto airflow direction, auto ON/OFF, auto fan and setting based on human presence.

Special Function

Basic Function



Remote control
Control indoor units remotely using the blind spots LCD display wireless controller



Silent operation
Indoor units that offer very low sound pressure levels during operation.



Adjustable louver's position
Louver's position of indoor units can be adjusted in different levels and angles.



Swing louver
Louvers of indoor unit automatically swings up and down to evenly distribute air across the room.



Fan speed
Selectable fan speeds are available.



Auto fan speed
Automatically controls rotation speed of fan depending on indoor load to achieve efficiency and comfort simultaneously.

Air Quality



Fresh air introduction
Indoor units that are compatible to introduce fresh air into rooms with either an optional adapter or direct connection to the air return segment of the unit.



Standard filter included
Washable long life synthetic fibre return air filters are included with the unit.



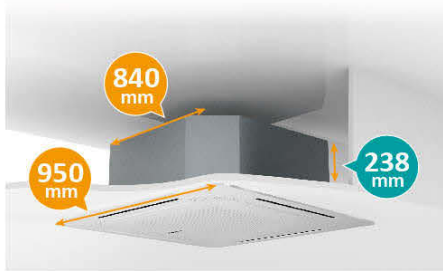
Optional filter
Washable long life synthetic fibre air filters does not come with indoor unit but an optional accessory.

4-Way Cassette Type Mini 4-Way Cassette Type

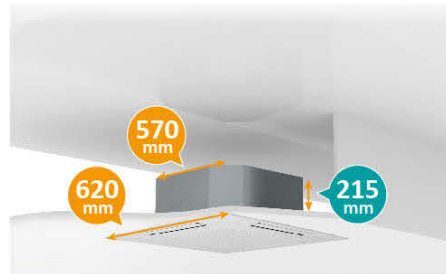


Compact and Classy Design

The 4 way cassette is now as slim as 238mm and 215mm for mini 4-way cassettes, fit for narrow ceiling spaces. Boring straight return air grille patterns are replaced with exquisite hexagon pattern design, upgrading taste and classiness of any interior aesthetic.



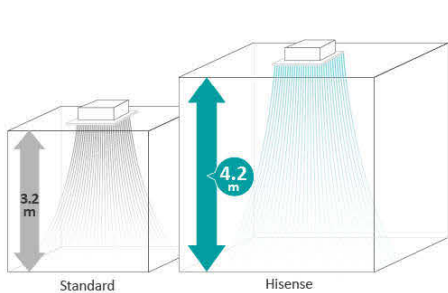
4-Way Cassette Type



Mini 4-way Cassette Type

Higher Installation

Air from the cassette still manages to flow down from ceiling heights as high as 4.2m. Not to mention human presence and density detection by motion sensor at such height.



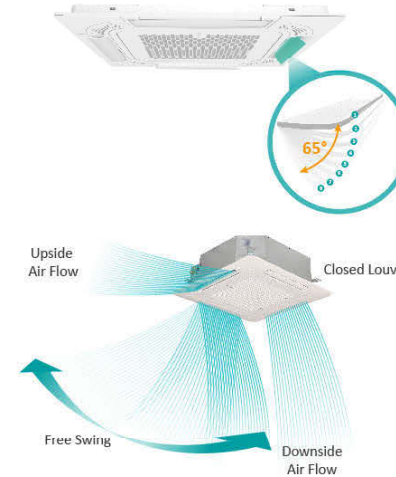
Branch Discharge Option

In irregular room layouts, branch discharge could come in handy by extending air distribution area to the most awkward corners without additional indoor units.



Independent Louvers Control

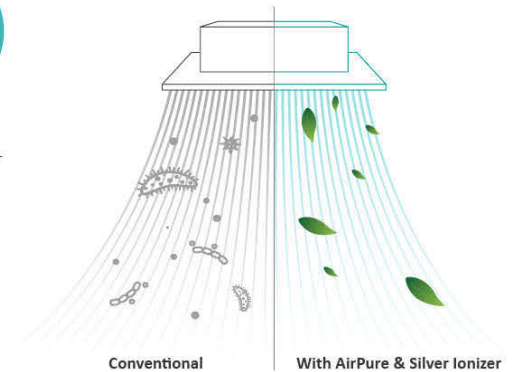
All 4 louvers on the cassette units can be adjusted independently in any 8 positions from 0° (closed) to 65° for more precise airflow direction maximizing user's comfort and adapting to various space layouts.



AirPure and Silver Ionizer

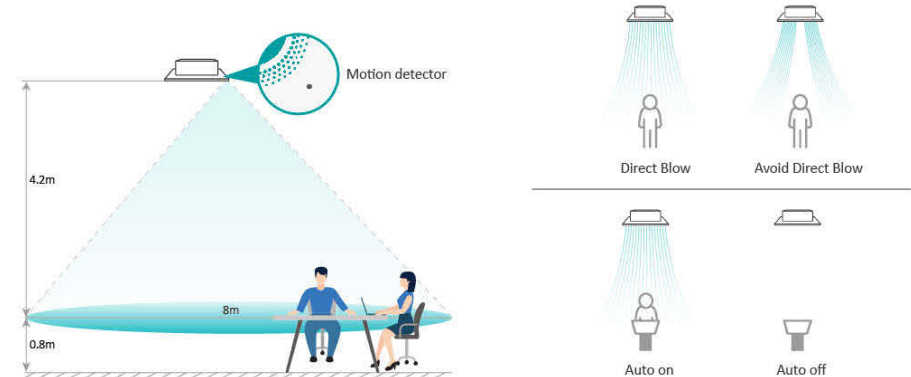
AirPure is a healthy alternative accessory to the normal conventional cassette unit to improve overall air quality. Airpure helps in improving skin condition, effective deodorizer and deactivating bacterias, virus and allergens floating in the air.

Silver ion accessory is also available to maintain the hygiene level of the drain pan preventing bacteria being transmitted out.

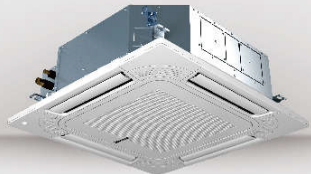


Motion Sensor

The sensor senses the presence of people to automatically turn the cassette unit on or off and whether to direct airflow towards or avoiding humans depend settings set on the controller. During crowded times, the setting temperature is automatically lowered down and vice versa. Meeting comfort and using energy only when necessary.



4-Way Cassette Type



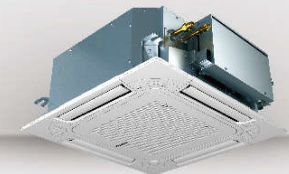
Model		AVBC-09 HJFKA	AVBC-12 HJFKA	AVBC-15 HJFKA	AVBC-19 HJFKA	AVBC-22 HJFKA	AVBC-24 HJFKA	AVBC-27 HJFKA	AVBC-30 HJFKA	AVBC-38 HJFKA	AVBC-48 HJFKA	AVBC-54 HJFKA	
Power Supply		AC 1Φ, 220~240V/50Hz(60Hz)											
Capacity	Cooling	kW	2.8	3.6	4.5	5.6	6.3	7.1	8.0	9.0	11.2	14.0	16.0
		Btu/h	9,600	12,300	15,400	19,100	21,500	24,200	27,300	30,700	38,200	47,800	54,600
Power Input	Cooling	kW	3.2	4.0	5.0	6.3	7.1	8.0	9.0	10.0	12.5	16.0	18.0
		Btu/h	9,900	13,600	17,100	21,500	24,200	27,300	30,700	34,100	42,700	54,600	61,400
Sound Pressure	Cooling	W	14	24	24	34	54	64	54	54	124	124	124
		W	14	24	24	34	54	64	54	54	124	124	124
Airflow Rate		dB(A)	30/28/28/	32/29/29/	33/31/29/	34/31/30/	36/33/32/	36/33/32/	37/36/35/	37/36/35/	42/40/38/	46/44/40/	46/44/41/
		dB(A)	27/26/26	28/27/26	29/27/26	28/28/26	31/29/28	31/29/28	33/31/30	33/31/30	36/34/33	38/36/34	40/38/36
Airflow Rate		m³/min	14.6/13.4/	16.5/14.0/	20.2/16.0/	22.0/17.5/	25.5/20.0/	26.7/21.0/	26.2/22.0/	26.2/23.0/	36.0/30.0/	36.1/33.5/	36.1/34.0/
		m³/min	12.0/10.8/	12.8/11.8/	14.9/13.6/	15.9/15.5/	18.3/17.0/	19.1/18.0/	20.3/18.7/	20.7/19.6/	27.4/24.8/	29.6/27.2/	30.7/28.9/
Piping	Connection Type	-	Flare-nut Connection(with Flare Nuts)										
	Liquid	mm	Φ6.35	Φ6.35	Φ6.35	Φ6.35	Φ9.53	Φ9.53	Φ9.53	Φ9.53	Φ9.53	Φ9.53	Φ9.53
Piping	Gas	inch	1/4	1/4	1/4	1/4	3/8	3/8	3/8	3/8	3/8	3/8	
	Condensate Drain	mm	1/2	1/2	1/2	1/2	1/2	5/8	5/8	5/8	5/8	5/8	
Weight	Net Weight	kg	20	20	21	21	23	26	26	26	26	26	
	Gross Weight	kg	24	24	25	25	27	31	31	31	31	31	
Dimensions	External	H mm	238	238	238	238	238	238	238	238	238	238	
	Packaging	W mm	840	840	840	840	840	840	840	840	840	840	
Dimensions	Packaging	H mm	292	292	292	292	292	292	342	342	342	342	
	Packaging	W mm	945	945	945	945	945	945	945	945	945	945	
Dimensions	Packaging	D mm	945	945	945	945	945	945	945	945	945	945	
	Model	-	HP-G-NK	HP-G-NK	HP-G-NK	HP-G-NK	HP-G-NK	HP-G-NK	HP-G-NK	HP-G-NK	HP-G-NK	HP-G-NK	
Dimensions	Panel Colour	-	Neutral White										
	Body	H mm	47	47	47	47	47	47	47	47	47	47	
Dimensions	Body	W mm	950	950	950	950	950	950	950	950	950	950	
	Body	D mm	950	950	950	950	950	950	950	950	950	950	
Dimensions	Packaging	H mm	105	105	105	105	105	105	105	105	105	105	
	Packaging	W mm	1014	1014	1014	1014	1014	1014	1014	1014	1014	1014	
Dimensions	Packaging	D mm	1014	1014	1014	1014	1014	1014	1014	1014	1014	1014	
	Net Weight	kg	5.7	5.7	5.7	5.7	5.7	5.7	5.7	5.7	5.7	5.7	
Dimensions	Gross Weight	kg	8	8	8	8	8	8	8	8	8	8	

NOTES:

1. The nominal cooling capacity and heating capacity are based on following conditions:
 Cooling Operation Conditions
 Indoor Air Inlet Temperature:27°C DB(80°F DB),19.0°C WB(66.2°F WB)
 Outdoor Air Inlet Temperature:35°C DB(95°F DB)
 Piping Length:7.5 Meters Piping Lift:0 Meter
 Heating Operation Conditions
 Indoor Air Inlet Temperature:20°C DB(68°F DB)
 Outdoor Air Inlet Temperature:7°C DB(45°F DB),6°C WB(43°F WB)

2. The sound pressure level is based on following conditions:1.5m beneath the unit.
 The above data was measured in an anechoic chamber so that reflected sound should be taken into consideration in the field.

Mini 4-Way Cassette Type



Model		AVC-05HJFA	AVC-07HJFA	AVC-09HJFA	AVC-12HJFA	AVC-15HJFA	AVC-17HJFA	AVC-19HJFA	
Power Supply		AC 1Φ, 220~240V/50Hz/60Hz							
Capacity	Cooling	kW	1.5	2.2	2.8	3.6	4.5	5.0	5.6
		Btu/h	5,100	7,480	9,520	12,240	15,300	17,000	19,040
Power Input	Cooling	kW	2.0	2.5	3.3	4.2	5.0	5.6	6.3
		Btu/h	6,800	8,500	11,220	14,280	17,000	19,040	21,420
Sound Pressure	Cooling	W	80	80	80	80	80	80	80
		W	80	80	80	80	80	80	80
Airflow Rate		dB(A)	30/29/28/26	30/29/28/26	32/30/28/26	34/32/29/26	38/36/31/28	42/39/36/31	45/42/38/34
		m³/min	7.2/6.5/6.2/5.6	7.2/6.5/6.2/5.6	7.8/7.2/6.5/5.8	8.2/7.2/6.5/5.8	9.3/8.7/7.1/6.7	11.0/9.5/8.7/7.1	12.5/10.8/9.3/8.0
Piping	Connection Type	-	Flare-nut Connection(with Flare Nuts)						
	Liquid	mm	Φ6.35	Φ6.35	Φ6.35	Φ6.35	Φ6.35	Φ6.35	Φ6.35
Piping	Gas	inch	1/4	1/4	1/4	1/4	1/4	1/4	1/4
	Condensate Drain	mm	1/2	1/2	1/2	1/2	1/2	1/2	1/2
Weight	Net Weight	kg	14.5	14.5	14.8	14.8	15.8	15.8	15.8
	Gross Weight	kg	17.3	17.3	17.6	17.6	18.6	18.6	18.6
Dimensions	External	H mm	215	215	215	215	215	215	215
	Packaging	W mm	570	570	570	570	570	570	570
Dimensions	Packaging	H mm	292	292	292	292	292	292	292
	Packaging	W mm	668	668	668	668	668	668	668
Dimensions	Packaging	D mm	730	730	730	730	730	730	730
	Model	-	HPE-D-NK	HPE-D-NK	HPE-D-NK	HPE-D-NK	HPE-D-NK	HPE-D-NK	HPE-D-NK
Dimensions	Panel Colour	-	Neutral White						
	Body	H mm	37	37	37	37	37	37	37
Dimensions	Body	W mm	620	620	620	620	620	620	
	Body	D mm	620	620	620	620	620	620	
Dimensions	Packaging	H mm	115	115	115	115	115	115	
	Packaging	W mm	680	680	680	680	680	680	
Dimensions	Packaging	D mm	690	690	690	690	690	690	
	Net Weight	kg	2.7	2.7	2.7	2.7	2.7	2.7	
Dimensions	Gross Weight	kg	4.5	4.5	4.5	4.5	4.5	4.5	

NOTES:

1. The nominal cooling capacity and heating capacity are based on following conditions:
 Cooling Operation Conditions
 Indoor Air Inlet Temperature:27°C DB(80°F DB),19.0°C WB(66.2°F WB)
 Outdoor Air Inlet Temperature:35°C DB(95°F DB)
 Piping Length:7.5 Meters Piping Lift:0 Meter
 Heating Operation Conditions
 Indoor Air Inlet Temperature:20°C DB(68°F DB)
 Outdoor Air Inlet Temperature:7°C DB(45°F DB),6°C WB(43°F WB)

2. The sound pressure level is based on following conditions:1.5m beneath the unit.
 The above data was measured in an anechoic chamber so that reflected sound should be taken into consideration in the field.