

# Wall Mounted Type

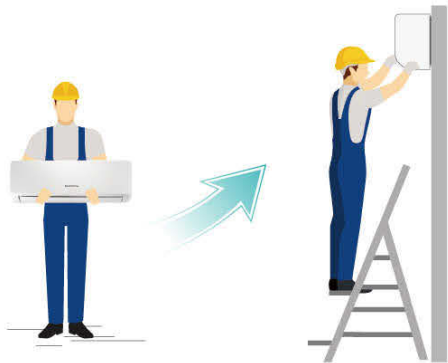
## Sleek Smooth Design

Shiny white cover panel of the unit has an elegant aesthetic. The unit also offers LED temperature display hidden under the smooth panel and eases cleaning routine without compromising user's convenience while setting the temperature.



## Lighter to Simplify Installation

Light weighted resins composites are used for the panels, louvers and other parts to reduce overall weight per unit for a simpler installation experience.



## Flexible Piping Connection

Both refrigerant and drainage pipings are freely to connect in any direction including any sides. An additional direction to the back of the unit for refrigerant pipes to allow passing through walls.



## Wall Mounted Type



Model		AVS-07 URCSABA	AVS-09 URCSABA	AVS-12 URCSABA	AVS-14 URCSABA	AVS-17 URCSABA	AVS-18 URCSBBA	AVS-22 URCSBBA	AVS-24 URCSBBA	
Power Supply		AC 1Ø, 220V~240V/50Hz								
Model		AVS-07 UR2SABA	AVS-09 UR2SABA	AVS-12 UR2SABA	AVS-14 UR2SABA	AVS-17 UR2SABA	AVS-18 UR2SBBA	AVS-22 UR2SBBA	AVS-24 UR2SBBA	
Power Supply		AC 1Ø, 220V/60Hz								
Capacity	Cooling	kW	2.2	2.8	3.6	4.0	5.0	5.6	6.3	7.1
		Btu/h	7,500	9,500	12,300	13,600	17,000	19,100	21,500	24,200
Heating		kW	2.5	3.3	4.0	4.5	5.6	6.3	7.1	8.0
		Btu/h	8,500	11,100	13,600	15,300	19,100	21,500	24,200	27,300
Power Input	Cooling	W	50	50	60	60	65	54	62	72
	Heating	W	50	50	60	60	65	62	72	82
Sound Pressure	dB(A)	39/34/32/28	39/34/32/28	43/39/32/28	43/39/32/28	45/40/34/29	41/37/34/30	44/41/36/31	46/43/38/33	
Airflow Rate	m³/min	11.0/9.8/8.7/7.7	11.0/9.8/8.7/7.7	13.8/11.0/8.7/7.7	13.8/11.0/8.7/7.7	15.0/12.5/9.8/7.7	14.8/13.0/11.2/9.7	16.8/14.9/11.9/10.3	18.7/16.4/13.4/10.8	
Panel Colour	-	White	White	White	White	White	White	White	White	
Piping	Connection Type	-	Flare-nut Connection(with Flare Nuts)							
	Liquid	mm	Ø 6.35	Ø 6.35	Ø 6.35	Ø 6.35	Ø 6.35	Ø 9.53	Ø 9.53	Ø 9.53
		inch	1/4	1/4	1/4	1/4	1/4	3/8	3/8	3/8
	Gas	mm	Ø 12.7	Ø 12.7	Ø 12.7	Ø 12.7	Ø 12.7	Ø 15.88	Ø 15.88	Ø 15.88
inch		1/2	1/2	1/2	1/2	1/2	5/8	5/8	5/8	
Condensate Drain	mm	Ø.D.32								
Weight	Net Weight	kg	13.5	13.5	13.5	13.5	13.5	16.0	16.0	16.0
	Gross Weight	kg	17	17	17	17	17	20	20	20
Dimensions	External	H mm	315	315	315	315	315	315	315	315
		W mm	960	960	960	960	960	1120	1120	1120
	Packaging	D mm	230	230	230	230	230	230	230	230
		H mm	445	445	445	445	445	438	438	438
	W mm	1080	1080	1080	1080	1080	1238	1238	1238	
	D mm	355	355	355	355	355	349	349	349	

### NOTES:

1. The nominal cooling capacity and heating capacity are based on the following conditions:  
 Cooling Operation Conditions  
 Indoor Air Inlet Temperature: 27°C DB(80°F DB), 19.0°C WB(66.2°F WB)  
 Outdoor Air Inlet Temperature: 35°C DB(95°F DB)  
 Piping Length: 7.5 Meters Piping Lift: 0 Meter  
 Heating Operation Conditions  
 Indoor Air Inlet Temperature: 20°C DB(68°F DB)  
 Outdoor Air Inlet Temperature: 7°C DB(45°F DB), 6°C WB(43°F WB)

2. The sound pressure level is based on the following conditions:  
 1.1m beneath the unit and 1.0m from inlet grille.  
 Voltage of the power source for the indoor fan motor is 220V.  
 In case of the power source of 240V, the sound pressure level increases by about 1~2dB.  
 The above data was measured in an anechoic chamber so that the reflected sound should be taken into consideration in the field.