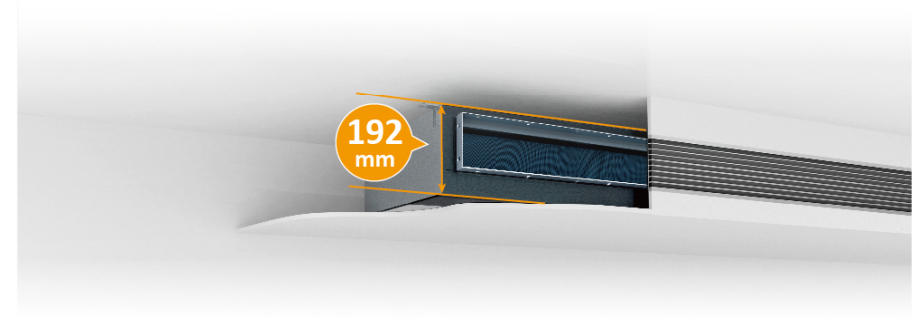


Ceiling Ducted Type (AC/DC Low Height, High/Low Static Pressure)



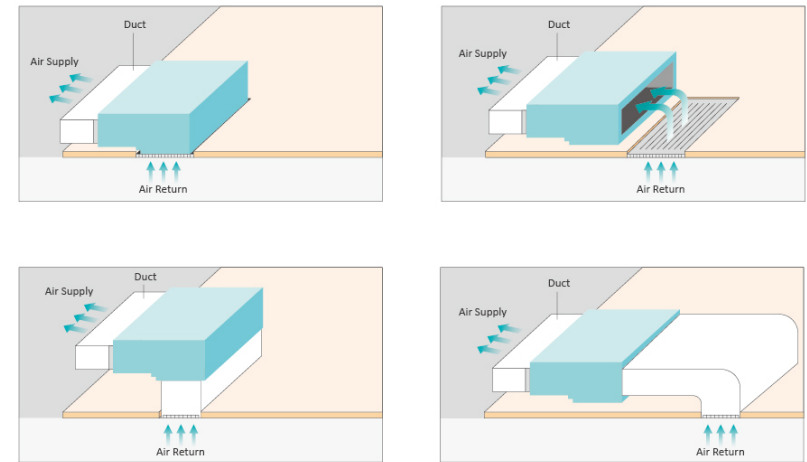
Space Saving

Concealed AC/DC Low Height Ducted unit is as slim as 192mm, fitting into the narrowest ceiling spaces. Save ceiling spaces for higher room height without compromising user's comfort and satisfaction.



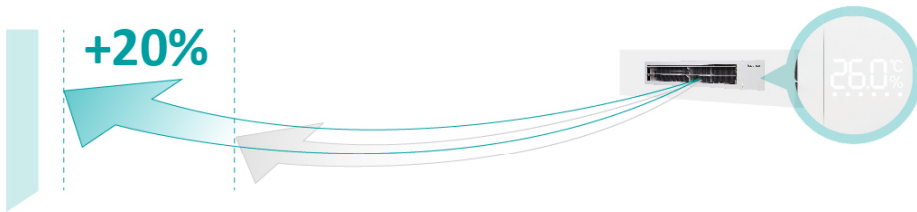
Flexible Air Supply and Return

Available air return as rear or bottom entry, consumers can choose relevant air return mode according to the practical installation space.



3D Air Flow

Classy air discharge louver panel with LED temperature and humidity display is available as an optional accessory for the AC/DC Low Height Ducted Units. The 3D louvers on the panel offer wide air flow coverage to keep every corners of your room cool or warm in any seasons of the year.



Smart & Precise Temperature Control

To prevent the human height area of the room cools or warms to user's ideal temperature setting. Two Temperature Sensor Control Technology is integrated into the unit whereby the controller, and return section consist of built in temperature sensors to send real-time signals to the unit for a more precise supplying temperature.



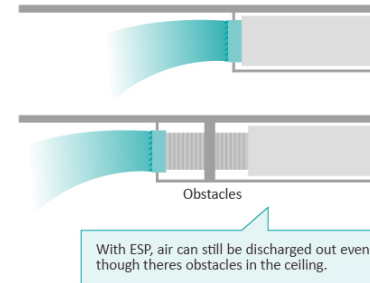
Hisense VRV



Conventional

Adjustable Static Pressure*

Static pressures in free supply applications would create unnecessary air-blowing noises. Hence, the fan's static pressure is made adjustable to suit different applications more precisely with smaller adjustment steps.



*: AC/DC Low Height, Low Static and High Static Pressure Ducted Unit have different number of static pressure choices, please refer to the specifications for more detail information.

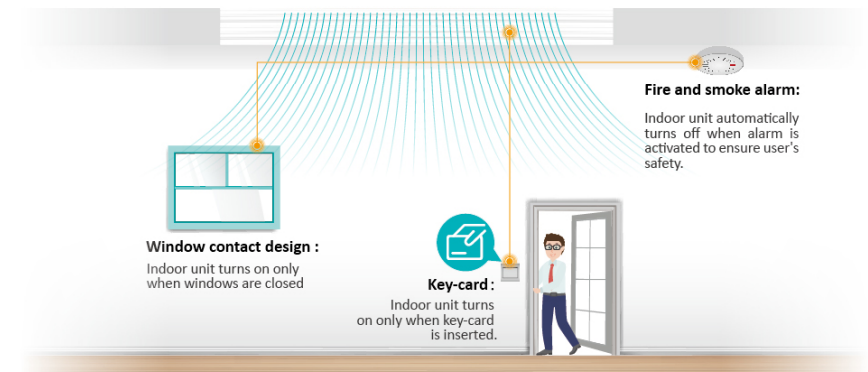
New Improved Bendable Filters

Standard filters that comes with AC/DC Low Height Ducted Units are now improved to be bendable by improving the material's malleability to improve installation flexibility in narrow ceiling height and restricted spaces.

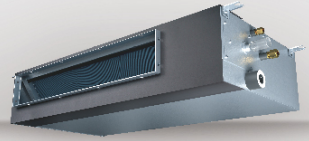


Various Device Connection Options

Third party devices and sensors to control the power supply are possible with dry contact connections to the indoor unit. Devices like hotel room key card, window contact and fire alarms can be connected simultaneously.



Ceiling Ducted Type(AC Low Height)



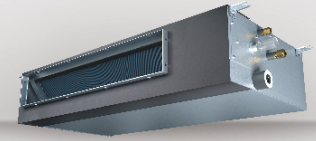
Model		AVE-05 HCFL	AVE-07 HCFL	AVE-09 HCFL	AVE-12 HCFL	AVE-15 HCFL	AVE-17 HCFL	AVE-19 HCFL	AVE-22 HCFL	AVE-24 HCFL	
Power Supply		AC 1Ø,220V~240V/50Hz									
Capacity	Cooling	kW	1.7	2.2	2.8	3.6	4.5	5.0	5.6	6.3	7.1
		Btu/h	5,800	7,500	9,600	12,300	15,300	17,100	19,100	21,500	24,200
Capacity	Heating	kW	1.9	2.5	3.2	4.0	5.0	5.6	6.3	7.1	8.0
		Btu/h	6,500	8,500	11,300	13,600	17,100	19,100	21,500	24,200	27,300
Power Input	Cooling	W	50	50	70	70	80	80	100	120	120
	Heating	W	50	50	70	70	80	80	100	120	120
Sound Pressure	dB(A)	29/24/22	29/24/22	35/25/23	35/25/23	36/25/23	36/25/23	35/25/23	39/26/25	39/26/25	
Airflow Rate	m³/min	7/5.5/4.7	7/5.5/4.7	9/5.7/4.8	9/5.7/4.8	12/6.3/5.5	12/6.3/5.5	13.5/8/7.7	18/9.3/8.7	18/9.3/8.7	
External Static Pressure	Pa	10(30)	10(30)	10(30)	10(30)	10(30)	10(30)	10(30)	10(30)	10(30)	
Piping	Connection Type	-	Flare-nut Connection(with Flare Nuts)								
	Liquid	mm	Ø 6.35	Ø 6.35	Ø 6.35	Ø 6.35	Ø 6.35	Ø 6.35	Ø 6.35	Ø 9.53	Ø 9.53
		inch	1/4	1/4	1/4	1/4	1/4	1/4	1/4	3/8	3/8
	Gas	mm	Ø 12.7	Ø 12.7	Ø 12.7	Ø 12.7	Ø 12.7	Ø 12.7	Ø 15.88	Ø 15.88	Ø 15.88
		inch	1/2	1/2	1/2	1/2	1/2	1/2	5/8	5/8	5/8
Condensate Drain	mm	O.D.32									
Weight	Net Weight	kg	16	16	17	17	21	21	25	26	26
	Gross Weight	kg	19	19	20	20	24	24	29	29	29
Dimensions	External	H mm	192	192	192	192	192	192	192	192	192
		W mm	700	700	700	700	910	910	1180	1180	1180
		D mm	447	447	447	447	447	447	447	447	447
	Packaging	H mm	270	270	270	270	270	270	270	270	270
		W mm	925	925	925	925	1136	1136	1406	1406	1406
		D mm	574	574	574	574	574	574	574	574	574

NOTES:

1. The nominal cooling capacity and heating capacity are based on the following conditions:
 Cooling Operation Conditions
 Indoor Air Inlet Temperature: 27°C DB(80°F DB), 19.0°C WB(66.2°F WB)
 Outdoor Air Inlet Temperature: 35°C DB(95°F DB)
 Piping Length: 7.5 Meters Piping Lift: 0 Meter
 Heating Operation Conditions
 Indoor Air Inlet Temperature: 20°C DB(68°F DB)
 Outdoor Air Inlet Temperature: 7°C DB(45°F DB), 6°C WB(43°F WB)

2. The sound pressure level is based on the following conditions: 1.5m beneath the unit.
 The above data was measured in an anechoic chamber so that the reflected sound should be taken into consideration in the field.

Ceiling Ducted Type(DC Low Height)



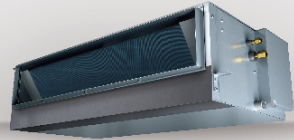
Model		AVE-05 HJFDL	AVE-07 HJFDL	AVE-09 HJFDL	AVE-12 HJFDL	AVE-15 HJFDL	AVE-17 HJFDL	AVE-19 HJFDL	AVE-22 HJFDL	AVE-24 HJFDL	
Power Supply		AC 1Ø,220V~240V/50Hz/60Hz									
Capacity	Cooling	kW	1.7	2.2	2.8	3.6	4.5	5.0	5.6	6.3	7.1
		Btu/h	5,800	7,500	9,600	12,300	15,300	17,100	19,100	21,500	24,200
Capacity	Heating	kW	1.9	2.5	3.2	4.0	5.0	5.6	6.3	7.1	8.0
		Btu/h	6,500	8,500	11,300	13,600	17,100	19,100	21,500	24,200	27,300
Power Input	Cooling	W	30	30	50	50	60	60	90	90	
	Heating	W	30	30	50	50	60	60	90	90	
Sound Pressure	dB(A)	28/27/26/	28/27/26/	35/32/32/	35/32/32/	35/32/32/	35/32/32/	35/32/32/	38/36/35/	38/36/35/	
		24/23/21	24/23/21	30/26/23	30/26/23	30/26/23	30/26/23	28/25/23	33/31/24	33/31/24	
Airflow Rate	m³/min	7.0/6.5/6.1/	7.0/6.5/6.1/	9.0/8.1/7.3/	9.0/8.1/7.3/	12/10.8/9.4/	12/10.8/9.4/	13.5/12.5/11.2/	18/16.1/14.3/	18/16.1/14.3/	
External Static Pressure	Pa	5.7/5.3/4.8	5.7/5.3/4.8	6.7/5.9/5.2	6.7/5.9/5.2	8.1/6.8/5.5	8.1/6.8/5.5	10.0/8.8/7.7	12.3/10.5/8.7	12.3/10.5/8.7	
Piping	Connection Type	-	Flare-nut Connection(with Flare Nuts)								
	Liquid	mm	Ø 6.35	Ø 6.35	Ø 6.35	Ø 6.35	Ø 6.35	Ø 6.35	Ø 6.35	Ø 9.53	Ø 9.53
		inch	1/4	1/4	1/4	1/4	1/4	1/4	1/4	3/8	3/8
	Gas	mm	Ø 12.7	Ø 12.7	Ø 12.7	Ø 12.7	Ø 12.7	Ø 12.7	Ø 15.88	Ø 15.88	Ø 15.88
		inch	1/2	1/2	1/2	1/2	1/2	1/2	5/8	5/8	5/8
Condensate Drain	mm	O.D.32									
Weight	Net Weight	kg	16	16	17	17	20	20	24	24	24
	Gross Weight	kg	19	19	20	20	24	24	29	29	29
Dimensions	External	H mm	192	192	192	192	192	192	192	192	192
		W mm	700	700	700	700	910	910	1180	1180	1180
		D mm	447	447	447	447	447	447	447	447	447
	Packaging	H mm	270	270	270	270	270	270	270	270	270
		W mm	925	925	925	925	1136	1136	1406	1406	1406
		D mm	574	574	574	574	574	574	574	574	574

NOTES:

1. The nominal cooling capacity and heating capacity are based on the following conditions:
 Cooling Operation Conditions
 Indoor Air Inlet Temperature: 27°C DB(80°F DB), 19.0°C WB(66.2°F WB)
 Outdoor Air Inlet Temperature: 35°C DB(95°F DB)
 Piping Length: 7.5 Meters Piping Lift: 0 Meter
 Heating Operation Conditions
 Indoor Air Inlet Temperature: 20°C DB(68°F DB)
 Outdoor Air Inlet Temperature: 7°C DB(45°F DB), 6°C WB(43°F WB)

2. The sound pressure level is based on the following conditions: 1.5m beneath the unit.
 The above data was measured in an anechoic chamber so that the reflected sound should be taken into consideration in the field.

Ceiling Ducted Type (High Static Pressure)

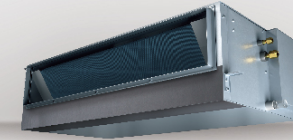


Model	AVD-07 HCFC	AVD-09 HCFC	AVD-12 HCFC	AVD-15 HCFC	AVD-19 HCFC	AVD-22 HCFC	AVD-24 HCFC	AVD-27 HCFC	AVD-30 HCFC	AVD-38 HCFC	AVD-48 HCFC	AVD-54 HCFC	AVD-76U X6SEH*1	AVD-96U X6SFH*1		
Power Supply	AC 1Ø, 220V~240V/50Hz															
Model	AVD-07 HCFC	AVD-09 HCFC	AVD-12 HCFC	AVD-15 HCFC	AVD-19 HCFC	AVD-22 HCFC	AVD-24 HCFC	AVD-27 HCFC	AVD-30 HCFC	AVD-38 HCFC	AVD-48 HCFC	AVD-54 HCFC	AVD-76U X2SEH*2	AVD-96U X2SFH*2		
Power Supply	AC 1Ø, 208~230V/60Hz															
Capacity	Cooling	kW	2.2	2.8	3.6	4.5	5.6	6.3	7.1	8.0	9.0	11.2	14.0	16.0	22.4	28.0
	Heating	kW	2.5	3.2	4.0	5.0	6.3	7.1	8.0	9.0	10.0	12.5	16.0	18.0	25	31.5
Power Input	Cooling	kW	0.10(0.13)**	0.10(0.13)**	0.13(0.16)**	0.13(0.16)**	0.14(0.21)**	0.19(0.24)**	0.19(0.24)**	0.25(0.34)**	0.25(0.34)**	0.34(0.45)**	0.43(0.59)**	1.03	1.28	
	Heating	kW	0.10(0.13)**	0.10(0.13)**	0.13(0.16)**	0.13(0.16)**	0.14(0.21)**	0.19(0.24)**	0.19(0.24)**	0.25(0.34)**	0.25(0.34)**	0.34(0.45)**	0.43(0.59)**	1.03	1.28	
Sound Pressure	220-240V/50Hz	dB(A)	32/27/25	32/27/25	35/32/26	35/32/26	36/35/30	39/32/25	39/32/25	42/39/34	42/39/34	43/40/35	46/40/35	52	54	
	208V/60Hz	dB(A)	33/28/24	33/28/24	37/34/29	37/34/29	37/35/29	39/32/25	39/32/25	42/38/33	42/38/33	44/39/34	45/40/34	52	54	
	230V/60Hz	dB(A)	37/33/28	37/33/28	40/38/33	40/38/33	42/40/34	43/37/30	43/37/30	44/42/37	44/42/37	47/43/38	46/42/38	52	54	
Air Flow(Hi/Me/Lo)	m ³ /min	9/7/6	9/7/6	12/10/8.5	12/10/8.5	15/13/10	19/14/10	19/14/10	28/24/19.5	28/24/19.5	35.5/29/24	39/31/24	58	77.5		
External Static Pressure	220-240V/50Hz	Pa	50(80)	50(80)	50(80)	50(80)	50(80)	50(80)	120(90)	120(90)	120(90)	120(90)	220	220		
	208V/60Hz	Pa	80(105)	80(105)	90(115)	90(115)	90(115)	90(115)	170(150)	170(150)	170(150)	170(150)	-	-		
Piping	Connection Type	-	Flare-nut Connection(with Flare Nuts)										Brazing			
	Liquid	mm	Ø6.35	Ø6.35	Ø6.35	Ø6.35	Ø6.35	Ø9.53	Ø9.53	Ø9.53	Ø9.53	Ø9.53	Ø9.53	Ø9.53	Ø9.53	
	inch	1/4	1/4	1/4	1/4	1/4	3/8	3/8	3/8	3/8	3/8	3/8	3/8	3/8	3/8	
	Gas	mm	Ø12.7	Ø12.7	Ø12.7	Ø12.7	Ø15.88	Ø15.88	Ø15.88	Ø15.88	Ø19.05	Ø19.05	Ø19.05	Ø19.05	Ø22.2	
	inch	1/2	1/2	1/2	1/2	5/8	5/8	5/8	5/8	3/4	3/4	3/4	3/4	7/8		
Condensate Drain	mm	O.D.32														
Weight	Net Weight	kg	25(24**)	25(24**)	25(24**)	25(24**)	30(31**)	30(31**)	30(31**)	45(44**)	45(44**)	45(44**)	53(50**)	53(50**)	94	106
	Gross Weight	kg	31(30**)	31(30**)	31(30**)	31(30**)	36(38**)	37(38**)	37(38**)	52(52**)	52(52**)	61(59**)	61(59**)	106	111	
Dimensions	External	H	mm	270	270	270	270	270	270	300	300	300	300	300	470	470
		W	mm	650+75	650+75	650+75	650+75	900+75	900+75	900+75	1100+75	1100+75	1100+75	1400+75	1400+75	1060
	Packaging	D	mm	720	720	720	720	720	720	800	800	800	800	800	1120	1120
		H	mm	385	385	385	385	385	385	415	415	415	415	415	1345	1345
	D	mm	895	895	895	895	1140	1140	1140	1345	1345	1345	1640	1640	1276	1466
D	mm	870	870	870	870	870	870	870	950	950	950	950	950	546	546	

NOTES:

- The nominal cooling capacity and heating capacity are based on the following conditions:
Cooling Operation Conditions
Indoor Air Inlet Temperature: 27°C DB(80°F DB), 19.0°C WB(66.2°F WB)
Outdoor Air Inlet Temperature: 35°C DB(95°F DB)
Piping Length: 7.5 Meters Piping Lift: 0 Meter
Heating Operation Conditions
Indoor Air Inlet Temperature: 20°C DB(68°F DB)
Outdoor Air Inlet Temperature: 7°C DB(45°F DB), 6°C WB(43°F WB)
- The sound pressure level is based on the following conditions: 1.5m beneath the unit. With discharge duct (2.0m) and return duct(1.0m)
The above data was measured in an anechoic chamber so that the reflected sound should be taken into consideration in the field.
- When bottom air inlet is adopted, the sound pressure will increase according to factors such as installation mode and the room structure.
*1: AC 3Ø, 380V/50Hz. *2: AC 3Ø, 380V/60Hz. *3: The value noted ** is the parameter of the indoor units with power supply 208~230V/60Hz.

Ceiling Ducted Type (Low Static Pressure)



Model	AVD-07 UX2SAL	AVD-09 HCFC	AVD-12 HCFC	AVD-15 HCFC	AVD-19 HCFC	AVD-22 HCFC	AVD-24 HCFC	AVD-27 HCFC	AVD-30 HCFC	AVD-38 HCFC	AVD-48 HCFC	AVD-54 HCFC	AVD-76U X6SEL*1	AVD-96U X6SFL*1						
Power Supply	AC 1Ø, 220V~240V/50Hz																			
Capacity	Cooling	kW	2.2	2.8	3.6	4.5	5.6	6.3	7.1	8.0	9.0	11.2	14.0	16.0	22.4	28.0				
	Heating	kW	2.5	3.2	4.0	5.0	6.3	7.3	8.7	9.3	11.6	14.5	16.5	25.0	31.5					
Power Input	Cooling	W	60	60	110	110	90	160	160	240	240	290	360	950	1120					
	Heating	W	60	60	110	110	90	160	160	240	240	290	360	950	1120					
Sound Pressure	dB(A)	27/23/21	27/23/21	34/30/25	34/30/25	32/30/25	35/28/24	35/28/24	38/33/30	38/33/30	41/38/33	44/39/33	50	52						
Air Flow Rate (Hi/Me/Lo)	m ³ /min	9/7/6	9/7/6	12/10/8.5	12/10/8.5	15/13/10	19/14/10	19/14/10	28/24/19.5	28/24/19.5	35.5/29/24	39/31/24	58	72						
External Static Pressure	220-240V/50Hz	Pa	30	30	30	30	30	30	30	30	30	30	60	60	100	100				
	208V/60Hz	Pa	30	30	30	30	30	30	30	30	30	30	60	60	100	100				
Piping	Connection Type	-	Flare-nut Connection(with Flare Nuts)										Brazing							
	Liquid	mm	Ø6.35	Ø6.35	Ø6.35	Ø6.35	Ø6.35	Ø9.53	Ø9.53	Ø9.53	Ø9.53	Ø9.53	Ø9.53	Ø9.53	Ø9.53					
	inch	1/4	1/4	1/4	1/4	1/4	3/8	3/8	3/8	3/8	3/8	3/8	3/8	3/8	3/8					
	Gas	mm	Ø12.7	Ø12.7	Ø12.7	Ø12.7	Ø15.88	Ø15.88	Ø15.88	Ø15.88	Ø19.05	Ø19.05	Ø19.05	Ø19.05	Ø22.2					
	inch	1/2	1/2	1/2	1/2	5/8	5/8	5/8	5/8	3/4	3/4	3/4	3/4	7/8						
Condensate Drain	mm	O.D.32																		
Weight	Net Weight	kg	25	25	25	25	30	30	30	30	30	30	45	45	94	106				
	Gross Weight	kg	31	31	31	31	36	37	37	37	37	37	52	52	61	61	106	111		
Dimensions	External	H	mm	270	270	270	270	270	270	270	270	270	270	270	300	300	300	300	470	470
		W	mm	650+75	650+75	650+75	650+75	900+75	900+75	900+75	1100+75	1100+75	1100+75	1400+75	1400+75	1060	1250			
	Packaging	D	mm	720	720	720	720	720	720	800	800	800	800	800	1120	1120				
		H	mm	385	385	385	385	385	385	415	415	415	415	415	1345	1345				
	D	mm	895	895	895	895	1140	1140	1140	1345	1345	1345	1640	1640	1276	1466				
D	mm	870	870	870	870	870	870	870	950	950	950	950	950	546	546					

NOTES:

- The nominal cooling capacity and heating capacity are based on the following conditions:
Cooling Operation Conditions
Indoor Air Inlet Temperature: 27°C DB(80°F DB), 19.0°C WB(66.2°F WB)
Outdoor Air Inlet Temperature: 35°C DB(95°F DB)
Piping Length: 7.5 Meters Piping Lift: 0 Meter
Heating Operation Conditions
Indoor Air Inlet Temperature: 20°C DB(68°F DB)
Outdoor Air Inlet Temperature: 7°C DB(45°F DB), 6°C WB(43°F WB)
- The sound pressure level is based on the following conditions: 1.5m beneath the unit. With discharge duct (2.0m) and return duct(1.0m)
The above data was measured in an anechoic chamber so that the reflected sound should be taken into consideration in the field.
- When bottom air inlet is adopted, the sound pressure will increase according to factors such as installation mode and the room structure.
*1: AC 3Ø, 380V/50Hz. *2: AC 3Ø, 380V/60Hz. *3: The value noted ** is the parameter of the indoor units with power supply 208~230V/60Hz.